



华创天辰  
CNTSUN

# SHIINE WITH SUN, GO AFTER DREAMS

GROUND/ OFFSHORE/ ROOF

SOLAR TRACKER/ FIXED MOUNTING SYSTEM/ BIPV



**THE WORLD'S LEADING SUPPLIER AND  
MANUFACTURER OF SOLAR MOUNTING SYSTEM**

**WUHAN CNTSUN NEW ENERGY CO., LTD.**

792 Gaoxin Avenue, East Lake Hi-tech Development Zone, Wuhan, Hubei

☎ 027-86951865

✉ info@cntsun.com

🌐 www.cntsun.com



TIKTOK



WECHAT

# Mission

- Promote global carbon neutrality process
- Build a green and harmonious global village



# Vision

- Let our excellent products reach each place in need globally
- Implant the good reputation into every customer's heart worldwide

# CONTENTS

<b>01</b>	<b>CNTSUN</b> -----01	
	Who We Are -----01	
<b>02</b>	<b>R&amp;D AND PRODUCTION</b> -----03	
	Production Capacity -----04	
	R&D and Innovation -----05	
<b>03</b>	<b>PRODUCTS &amp; SOLUTIONS</b> -----09	
	<b>Skyland • Ground Mounting System</b> -----10	
	Fixed Ground Mounting System	
	Ground Adjustable Mounting System	
	Solar Carport Mounting System	
	Solar Farm Mounting System	
	<b>Skytracker• Tracking System</b> -----13	
	Independent Horizontal Single-Axis Tracker	
	Smart Tilt Single Axis Pv Solar Tracker	
	<b>Skycourt• Roof Mounting System</b> -----15	
	BIPV	
	Flat Roofs	
	Pitched Roofs	
	Metal Roof	
	<b>Skywaves • Offshore Mounting System</b> -----17	
	Fixed Pile-based Mounting System	
	Floating Mounting System	
<b>04</b>	<b>GLOBAL PROJECTS</b> -----19	



## WUHAN CNTSUN NEW ENERGY CO., LTD.

### The World's Leading Manufactures And Solution Providers Of Solar Mounting System

Wuhan Cntsun New Energy Co., Ltd. (CNTSUN) is a comprehensive service provider involved in a variety of fields such as new energy, new infrastructure and health.

CNTSUN brand was founded in 2017 in Wuhan, a beautiful city in central China, with a registered capital of 50 million yuan. Headquartered in Wuhan Optics Valley of China, CNTSUN is a company that has won the titles of 'National High-Technology Expertise, Innovative Technology, 2023 Optics Valley of China Gazelle Top 10 High Growth, Top 20 PV Mounting in 2023, and 2023 China Solar Photovoltaic Mounting Structure Qingtian Award'.

CNTSUN mainly serves new energy power and railway construction enterprises. At present, CNTSUN has established close cooperation relationship with the "Five Major Power Central Enterprises and Six Small Power Enterprises" and the major Chinese construction engineering enterprises, and also has been praised by customers!



**30GW**

SHIPMENT



**10 GW**

ANNUAL  
PRODUCTION



**10+**  
YEARS

INDUSTRY  
EXPERIENCE



**30+**  
CUSTOMERS

TOP 500 COMPANIES



**TOP 20**

NATIONAL RANKING



## PRODUCTION CAPACITY

**50 ACRES**

FACTORY AREA

**200,000 TONS**

ANNUAL PRODUCTION

**80,000 TONS**

ANNUAL GALVANIZING CAPACITY

The factory spans 50 acres and includes 200,000 square meters of building space.

CNTSUN operates over 20 steel structure processing lines, utilizes more than 50 intelligent welding robots, 40 extrusion sets, and 16 gantry cranes, and features a modern hot dip galvanizing workshop.

## RESEARCH AND DEVELOPMENT AND PRODUCTION

CNTSUN has three intelligent R&D and manufacturing bases, as well as an independent galvanizing workshop and a complete supply chain system matching with the industry.



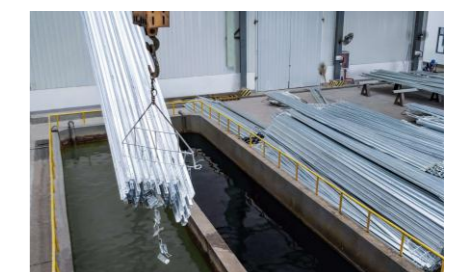
CENTRAL CHINA



EASTERN HUBEI



NORTH CHINA



# R&D AND INNOVATION

## R&D LEADERSHIP

CNTSUN boasts an industry-leading design and R&D team, which is able to provide customers with a complete range of mounting system solutions from pre-project consulting to product selection, design optimisation, mechanical calculations, deepening design. The director of the technical department has worked for well-known PV companies in the industry, accumulated more than ten years of professional work experience, participated in and led a number of major PV technology research and development projects.



R&D and Manufacturing Bases  
500+ Acres



Self-Driving Labs



Showroom



Long-Term Cooperation with Dr Huang Fei  
from China University of Geosciences



## QUALITY CONTROL

Strict control from scientific design to the assembly, we conduct 6 quality inspections to achieve the whole-process monitoring;

Five major testing processes in the factory laboratory (pull-out resistance test, salt spray test, film thickness test, surface treatment composition analysis, spectral analysis) ensure product quality.

Samples are regularly sent to third-party authorities for inspection.

## FACTORY PRE-ASSEMBLY

Before mass production and shipment of products, the factory will pre-assemble each component to ensure the compatibility between products and the overall stability and strength of the system;

Prefabrication is completed in the factory, and installation can be completed on-site by simply fixing and splicing fasteners.

# RECOGNITION & REWARDS

## HONORS

- ISO 45001 · ISO 14001 · ISO 9001
- National High-tech Enterprise
- 2023 Good Photovoltaic Annual Emerging Enterprise
- 2023 OVC Gazelle Top 10 High Growth Enterprises
- Global Top 20 Companies On PV 2023
- 2023 China Solar Photovoltaic Mounting Structure Qingtian Award



## CERTIFICATIONS

◆ CNTSUN products are backed by a robust five-year warranty and pledge lifelong after-sales support, reflecting our commitment to excellence. Our offerings boast multiple accreditations, testifying to their superior quality and safety standards.



# PARTNERS



# PRODUCTS AND SOLUTIONS

## SKYLAND • GROUND MOUNTING SYSTEM

### FIXED GROUND MOUNTING SYSTEM

#### APPLICABLE SCENARIOS

Large flat ground, fishery-solar hybrid project, various industrial, commercial, and residential purposes, large-scale power generation projects, slope or hilly areas.

#### THE VERSIONS



SINGLE- PILING



DOUBLE- PILING



FISHERY- SOLAR HYBRID



FLAT GROUND

#### ADVANTAGES

Fast construction, convenient maintenance, safety and reliability, and high durability, Adjustable from multiple angles, high practicality and economical efficiency.

#### PREVIOUS CASES

Yuxi, Yunnan 150MW, Changdu, Xizang 100MW, Mangshi, Yunnan, etc.

MAX WIND LOAD 1.0kN/m<sup>2</sup>

MAX SNOW LOAD 1.0kN/m<sup>2</sup>

ANGLE 15~65°

Carbon Steel  
Corten Steel

**MATERIALS**

**25 years**

**SERVICE LIFE**

HDG  
Hot Dip Zn-AL  
-MG Alloy

**ANTI-CORROSION**

Thickness>85µm

Ground Screw/  
Cast-in-place Pile/  
Precast Piles

**FOUNDATION**



## ■ SOLAR CARPORT MOUNTING SYSTEM

- ◆ **FOUNDATION**  
Pre-embedded steel pole
- ◆ **ADVANTAGES**  
Diverse functions, energy saving, cost-effective, high ROI, highly pre-installed, charging pile equipped.
- ◆ **THE VERSIONS**



STEEL CARPORT



WATERPROOF CARPORT



BILATERAL CARPORT

- ◆ **PREVIOUS CASES:** Lvliang, Shanxi

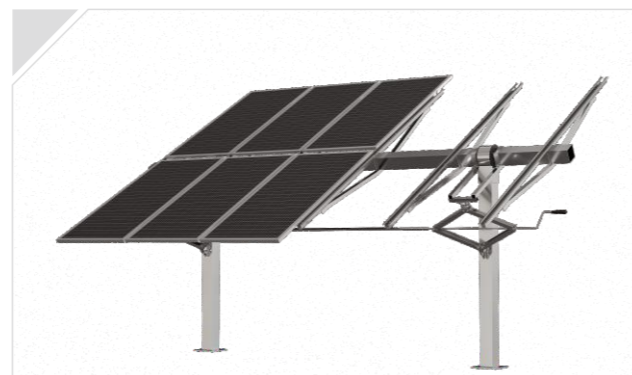


## ■ GROUND ADJUSTABLE MOUNTING SYSTEM

- ◆ **FOUNDATION**  
Cast-in-place pile/precast piles
- ◆ **PREVIOUS CASES**  
Ganzi, Sichuan 160MW
- ◆ **ADVANTAGES**  
Reliable transmission, quick construction, easy maintenance, high durability, good adaptability to adjustments, high power generation efficiency.
- ◆ **THE VERSIONS**



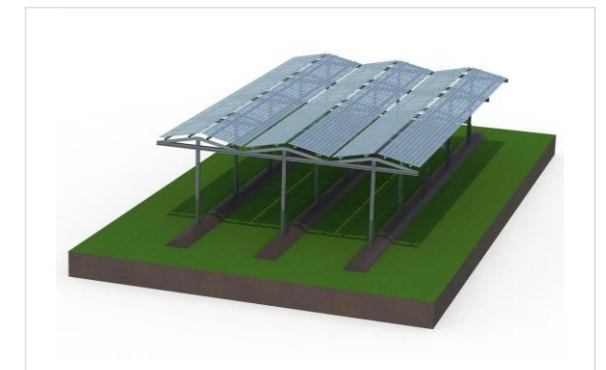
CAMBER



FIXED

## ■ SOLAR FARM MOUNTING SYSTEM

- ◆ **ADVANTAGES**  
Efficient agriculture, convenient maintenance, safety and reliability, high durability.
- ◆ **PREVIOUS CASES**  
Jining, Shandong





# SKYTRACKER • TRACKING SYSTEM

## INDEPENDENT HORIZONTAL SINGLE-AXIS TRACKER

### DESCRIPTIONS

Each PV module is set on an independent tracker structure with strong terrain adaptability, automatically adjusts the orientation and angle of the PV module through the slewing reducer, and realizes intelligent tracking of the sun's trajectory through the algorithm to maximize the power generation.

### THE VERSIONS



SMART SLEW DRIVE TRACKER



SMART ACTUATOR TRACKER

### ACCESSORIES

Reduction Motor, Actuator, Damper, Controller

### ADVANTAGES

Automatic tracking, no need for manual debugging, adaptable to different environments, easy to maintain, high durability, not affected by cloudy and rainy days.



## SMART TILT SINGLE AXIS PV SOLAR TRACKER

### DESCRIPTIONS

Smart Tilt Single Axis PV Solar Tracker is based on the Independent horizontal single-axis tracker, by lifting the inclined beams to a certain southward inclination angle, it can effectively alleviate the shortcomings of the flat single-axis in the poor radiation receiving ability when the sun's altitude angle is very low, both along the horizontal direction and along the pitching direction, which can greatly enhance the power generation capacity.

### ADVANTAGES

Greater Flexibility  
Field-proven Weather Durability  
Smart and Reliability  
High Energy Efficiency  
Ease of Installation

### ACCESSORIES

Reduction Motor, Damper, Controller





# SKYCOURT • ROOF MOUNTING SYSTEM

## BIPV

- **ADVANTAGES**  
Long service life, waterproof, recyclable, more efficiency, lower cost
- **APPLICABLE SCENARIOS**  
Commercial, industrial and residential roofs, carports, sun shelters, etc.
- **ACCESSORIES**  
Aluminum rails, clamps, margin plate, drainage pipe, waterproof connector, etc.



## FLAT ROOFS

- **FOUNDATION:** Cement pier + bolt
- **THE VERSIONS**



FLAT ROOF BALLASTED MOUNTING SYSTEM



ADJUSTABLE DOUBLE-ROW TRIPOD MOUNTING SYSTEM

## PITCHED ROOFS

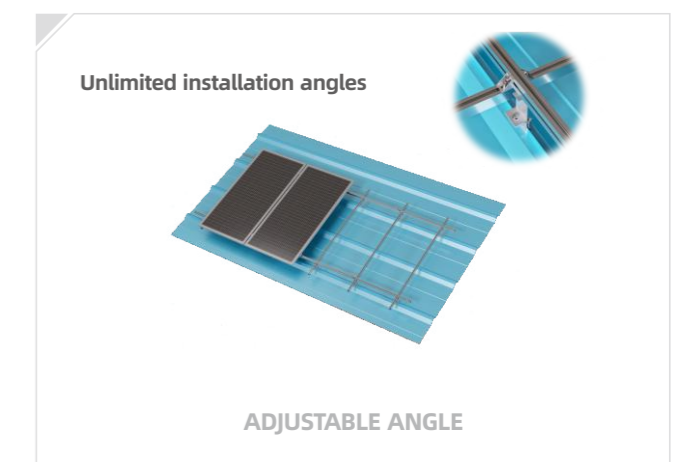
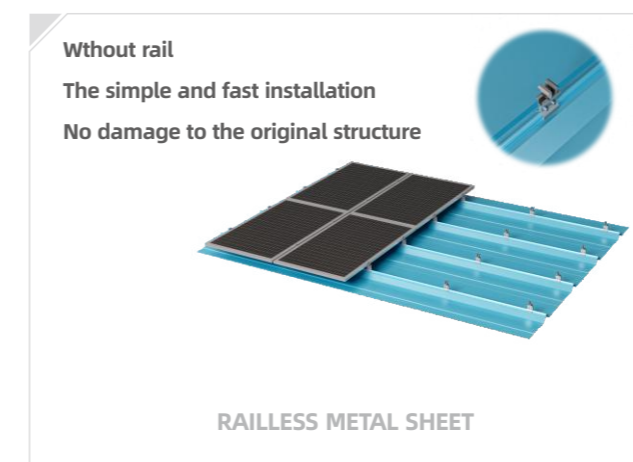
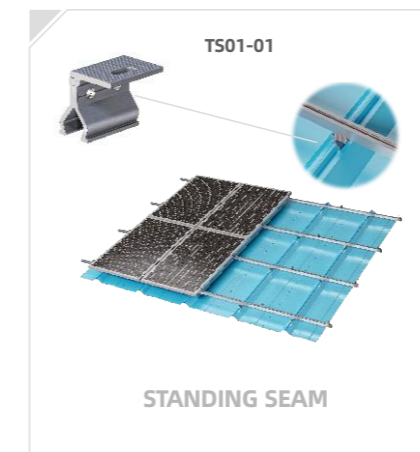
- **ACCESSORIES**  
Roof Hooks + Rail



## METAL ROOF

- **ACCESSORIES**  
Standing Seam Clamps + Rail + Module Clamps

### THE VERSIONS



# SKYWAVES • OFFSHORE MOUNTING SYSTEM

## ■ FIXED PILE-BASED MOUNTING SYSTEM

### • DESCRIPTIONS

The primary application of the fixed pile-based mounting system lies in offshore areas, where it excels. Constructed from high-strength steel, its robust main structure has been meticulously designed to optimize project efficiency. This approach significantly reduces both installation time and material costs, while fearlessly withstanding the harsh marine environment, ensuring durability and reliability in even the most challenging of conditions.

### • ADVANTAGES

Exceptional Performance in Extreme Conditions  
Top Corrosion-resistant Performance



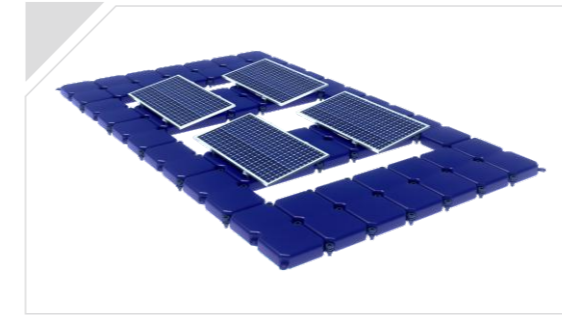
### • PREVIOUS CASES

Zhangzhou, Fujian 252MW

## ■ FLOATING MOUNTING SYSTEM

### • DESCRIPTIONS

Floating Mounting System is a form of racking in which PV modules are mounted on the water surface, which can be applied in many fields, such as marine engineering, fishery, agriculture, tourism and so on.



### • ADVANTAGES

Modular design, water temperature effectively reduces the working temperature of the module, slows down water evaporation, and prevents the outbreak of algae in the waters.

### • PREVIOUS CASES: White River Project



# GLOBAL PROJECTS

## LARGE SLOPE

Location: Chuxiong, Yunnan Volume: 130MW



## HIGH ANTI-CORROSION FISHERY-SOLAR HYBRID

Location: Shanwei, Guangdong

Volume: 150MW



## HIGH ANTI-CORROSION FISHERY-SOLAR HYBRID

Location: Changjiang, Hainan

Volume: 170MW



## OFFSHORE PV

Location: Zhangzhou, Fujian

Volume: 252MW



## LARGE SLOPE

Location: Yuxi, Yunnan

Volume: 150MW



## LARGE SLOPE

Location: Suoshan, Yunnan

Volume: 150MW



# PLATEAU PV POWER PLANT ALTITUDE 4000M+

Location: Ganzi, Sichuan

Volume: 160MW



## PLATEAU PV POWER PLANT



Location: Changdu, Tibet

Volume: 100MW

## DESERT



Location: Jinchang, Gansu

Volume: 300MW

## HYBRID SOLAR FARMS



Location: Yiliang, Yunnan

Volume: 150MW

## WIND-SOLAR-BATTERY HYBRID



Location: Wuxue, Hubei

Volume: 200MW

# LARGE SPAN

Location: Kuqa, Xinjiang

Volume: 100MW



## LARGE SPAN



Location: Urho District, Xinjiang

Volume: 100MW

## RESIDENTIAL ROOFTOP



Location: Dali, Shanxi

Volume: 100MW

## BIPV



Location: Shayang, Jingmen

Volume: 15MW