



METAL ROOF MOUNTING SYSTEM



- Lightweight Load-bearing: Made from aluminum alloy material
- Fast Installation: Fewer components
- Easy Maintenance: Versatile installation layouts for easy maintenance
- High Strength: Good resistance against bending and compression
- High-durability: Designed for a service life of up to 25 years

METAL ROOF MOUNTING SYSTEM



GENERAL

The mounting system, made of aluminum alloy material, mainly consists of clamps and rails. Adopted a uniform load and separate design, the mounting system features great flexibility, lightweight roof load, and high anti-corrosion performance.

This product is widely used in industrial or civil buildings, including metal roofs for warehouses, special buildings, and large-span steel structure houses. For different styles of tiles, we provide professional customized design, which ensures the clamps and metal roofs can be matched perfectly, enhancing power generation efficiency and ensuring structural integrity.

SPECIFICATION

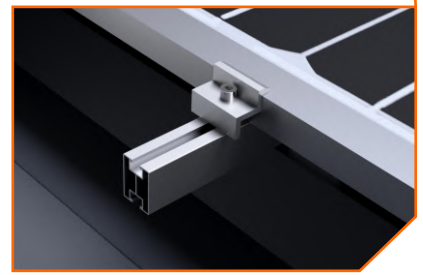
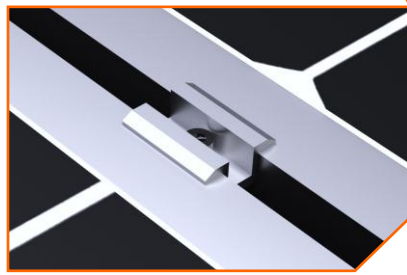
Application	Metal roof	Wind Load	40 m/s (customizable)
Tilt angle	In line with the roof slope	Snow Load	1.4KN/m ² (customizable)
Clamp type	Regular clamp	Clamp type	standing seam、trapezoidal clamp
Coating	Anodized	Module size	2278*1134*30 (customizable)
Layout	Horizontal or vertical	Material	Aluminum alloy 6063-T5、Aluminum alloy 6005-T5 Stainless steel SUS 304
Service life	25 years	Design standard	NB/T10115-2018

SYSTEM FEATURES

Perfect match: Preserve the structural integrity and waterproofing of the metal roof, ensuring high-quality installation.

Fast installation: Consisting of clamps and rails, it allows for modular assembly and flexible installation with fewer components.

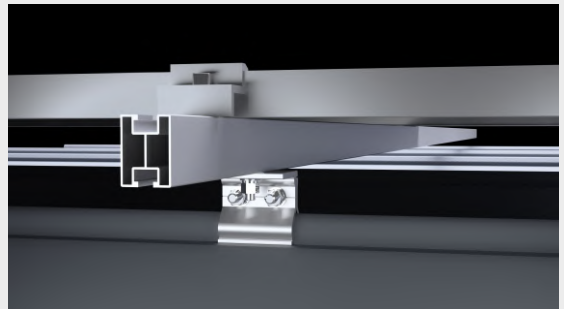
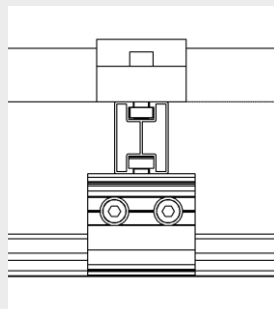
Corrosion resistance: The aluminum alloy structure and stainless steel fastening bolts ensure roof conditions and service life.



PRODUCT TYPES

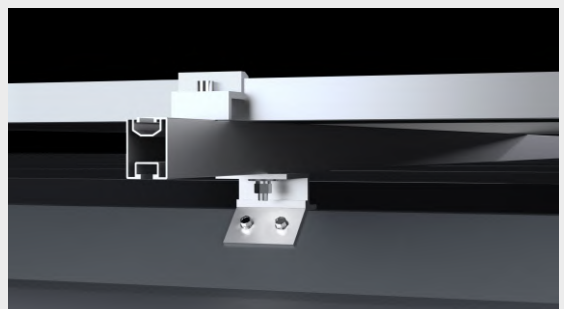
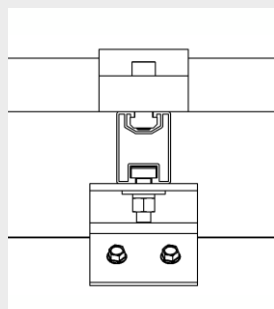
Standing seam clamp

Rail: HC-01-01-04
clamp: HC-01-02-01



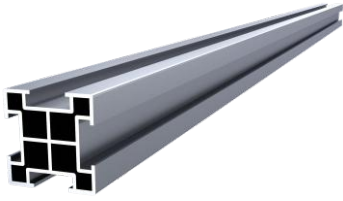
Trapezoidal roof clamp

Rail: HC-0c1-01-05
clamp: HC-01-01-05

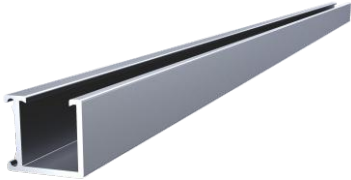


COMPONENTS

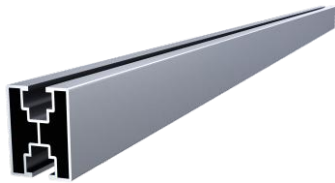
	Model	Material	Spec	Surface treatment
1 	HC-01-01-01 Rail	Aluminum alloy	30*50*1.2mm	Anodized
	HC-01-01-02 Rail	Aluminum alloy	25*40*1.3mm	Anodized
	HC-01-01-03 Rail	Aluminum alloy	41*41*2.0mm	Anodized
	HC-01-01-04 Rail	Aluminum alloy	30*40*1.2mm	Anodized
	HC-01-01-05 Rail	Aluminum alloy	30*40*1.2mm	Anodized
	HC-01-01-06 Rail	Aluminum alloy	30*40*1.2mm	Anodized
	HC-01-01-07 Rail	Aluminum alloy	20*40*2.3mm	Anodized



HC-01-01-08
Rail Aluminum alloy 40*40*1.3mm Anodized



HC-01-01-09
Rail Aluminum alloy 30*30*2.3mm Anodized



HC-01-01-10
Rail Aluminum alloy 30*40*1.2mm Anodized

2 ▼



HC-01-02-03
Clamp Aluminum alloy t=4.0mm Anodized



HC-01-02-04
Clamp Aluminum alloy t=4.0mm Anodized



HC-01-02-05
Clamp Aluminum alloy t=4.0mm Anodized



HC-01-02-02
Clamp Aluminum alloy t=4.0mm Anodized



HC-01-02-07
Clamp

Aluminum
alloy

t=4.0mm

Anodized

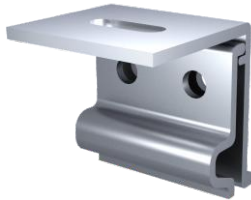


HC-01-02-08
Clamp

Aluminum
alloy

t=4.0mm

Anodized



HC-01-02-06
Clamp

Aluminum
alloy

t=4.0mm

Anodized



HC-01-02-01
Clamp

Aluminum
alloy

t=4.0mm

Anodized



HC-01-02-09
Clamp

Aluminum
alloy

t=4.0mm

Anodized



HC-01-02-10
Clamp

Aluminum
alloy

t=4.0mm

Anodized



End clamp

Aluminum
alloy

L=50;t=5.0mm

Anodized

4



Mid clamp Aluminum alloy L=50;t=5.0mm Anodized

5



T-Screw hammer head kits Stainless steel M8*30 SUS304

6



Internal Hex Screw Kits Stainless steel M8*30 SUS304



WUHAN CNTSUN NEW ENERGY CO., LTD.

792 Gaoxin Avenue, East Lake Hi-tech Development Zone, Wuhan, Hubei

THREE MANUFACTURING BASES:

CENTRAL CHINA、EASTERN HUBEI、NORTH CHINA

☎ 027-86951865

✉ info@cntsun.com

🌐 www.cntsun.com



TIKTOK



WECHAT